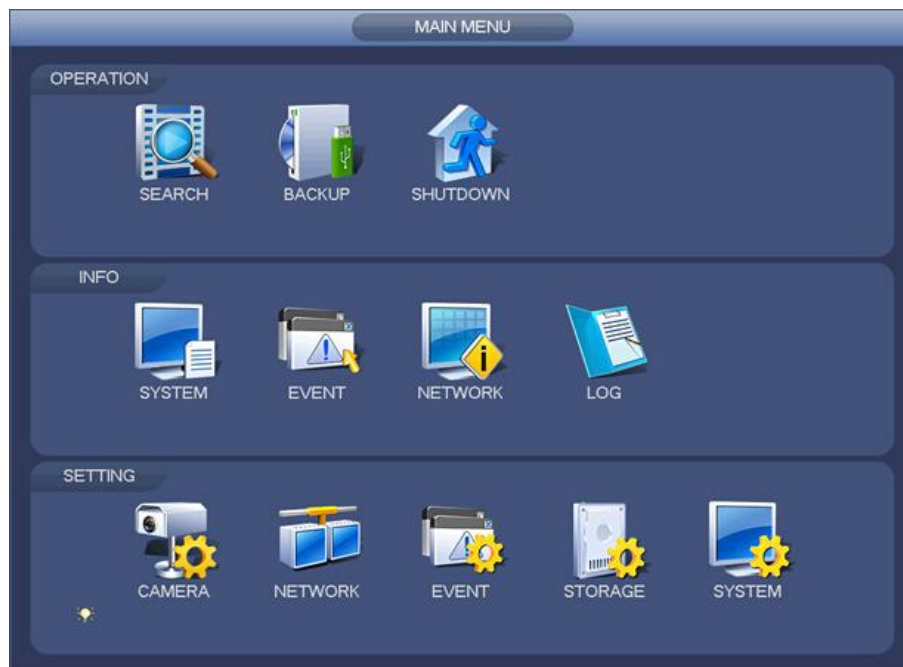
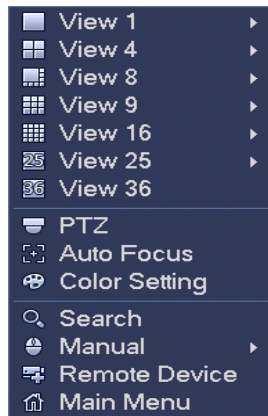


How-to Setup a Dahua DVR/NVR on a Local Area Network (LAN) Quick

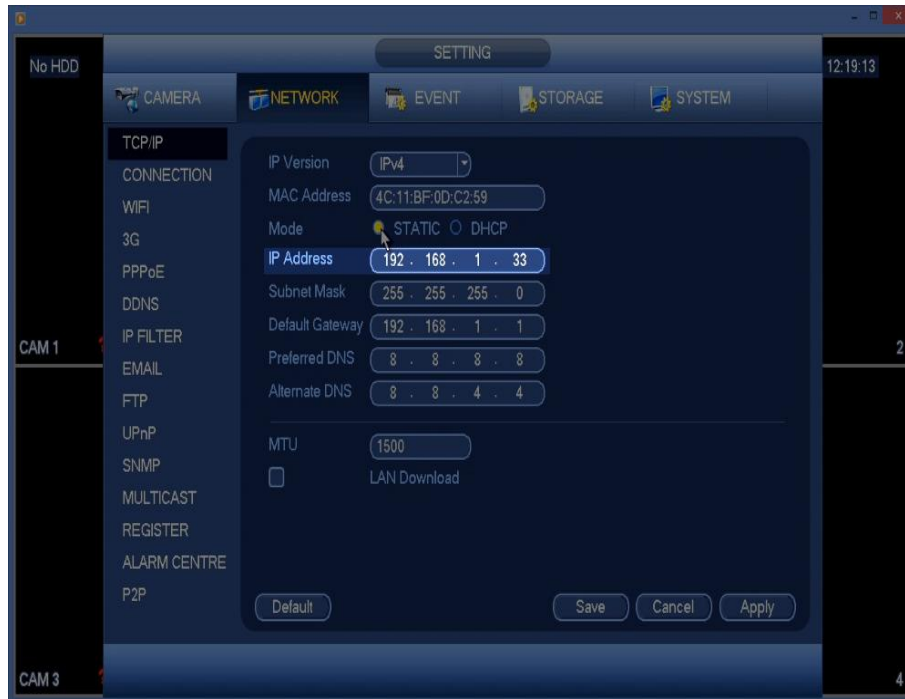
The title says it all. This how-to is QUICK and will show you how-to put your Dahua recorder on your local area network (LAN). This is the 1st step you must do if you want to access it locally from a PC on your network or via your “wi-fi.” This quick guide is for a Dahua recorder but the process is the same for most manufacturers.

1) Log in to your DVR and right click to open menu, click on **Main Menu**.



2) From the **Main Menu**, click on the **Network** icon.

- 3) Click on the **TCP/IP** tab on the top left.
- 4) Click on the **DHCP** button. All fields should fill with 0's. Click **Apply**, then click **Save**.
- 5) Wait 30 seconds or so and go back into the same **TCP/IP** section.
- 6) Write down your new IP address. Please note this is your DVR's **local IP address**. In the example below, the local IP address is **192.168.1.33**.
- 7) Disable **DHCP** by switching over to **Static**. Click **Apply** then click **Save**.



That's it. You just did the most basic LAN set-up of your DVR/NVR.